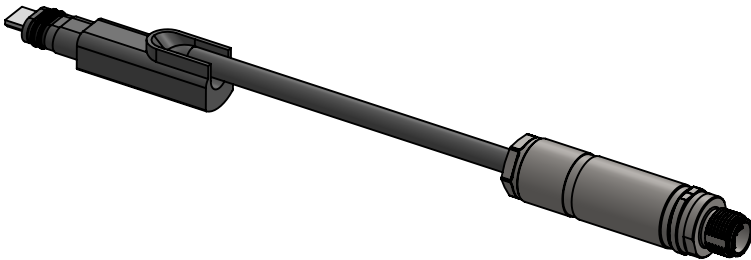


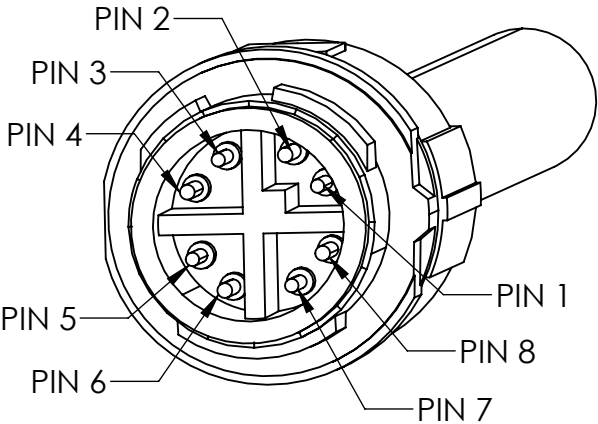
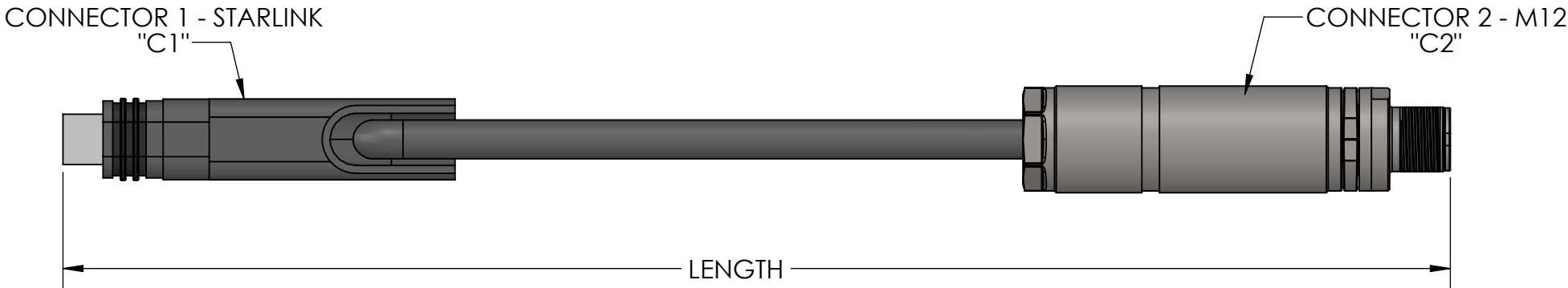
| SOURCE CONNECTOR AND PIN | SIGNAL NAME | COLOR | DESTINATION CONNECTOR AND PIN |
|--------------------------|--------------|--------------|-------------------------------|
| C1 | ETH A+ (48V) | ORANGE/WHITE | C2 - P1 |
| | ETH A- (48V) | ORANGE | C2 - P2 |
| | ETH B+ (48V) | GREEN/WHITE | C2 - P3 |
| | ETH B- (48V) | GREEN | C2 - P4 |
| | ETH C+ (GND) | BROWN/WHITE | C2 - P5 |
| | ETH C- (GND) | BROWN | C2 - P6 |
| | ETH D+ (GND) | BLUE/WHITE | C2 - P7 |
| | ETH D- (GND) | BLUE | C2 - P8 |

| REVISIONS | | | |
|-----------|-----------------|--------------|----------|
| REV. | DESCRIPTION | DATE | ENGINEER |
| A | INITIAL RELEASE | 18 SEPT 2024 | DE1 |

* WIRE COLORS FOR STARLINK LOW CAPACACITY CABLE ONLY!!!
INCORRECT TERMINATION WILL DAMAGE THE POE MODULE!!!




M12 CONNECTOR PINOUT



ASSEMBLY INSTRUCTIONS

- ALL WORKMANSHIP TO MEET A MINIMUM OF IPC-A-620 CLASS 2.
- CUT OFF ONE END FROM OFF THE SHELF CABLE AT APPROPRIATE LENGTH AND DISCARD.
- CABLE LENGTH IN MM TO BE APPENDED TO PART NUMBER BEFORE REVISION. FOR EXAMPLE, XXX-XXX-150-A IS CABLE PART NUMBER XXX-XXX-A IN A 150MM LONG CONFIGURATION.
- CABLE TO BE MEASURED FROM TIP TO TIP OF CONNECTOR HOUSINGS. LENGTH TOLERANCE TO BE +/-0.25".
- SOLDER OR CRIMP WIRES ONTO M12 CONNECTOR PER VENDOR BEST PRACTICE.
- PART NUMBER ALTERNATES MUST BE APPROVED BY CUSTOMER.
- SHIELD OF OFF THE SHELF CABLE TO BE CONNECTED TO CASE OF M12 CONNECTOR PER VENDOR BEST PRACTICE.
- ASSEMBLE FIELD TERMINATION M12 PER MANUFACTURER RECOMMENDATIONS.
- 100% ELECTRICAL INSPECTION FOR EACH CONDUCTOR AFTER ASSEMBLY. CHECK FOR CONTINUITY.
- CLOCKING OF CABLE ENDS NON-CRITICAL RELATIVE TO ONE ANOTHER.
- INDIVIDUALLY BAG AND TAG WITH COMPANY PART NUMBER AND REVISION AND VENDOR LOT CODE.
- HEATSHRINK LABEL PART NUMBER AND REVISION CENTERED ON WIRE.

| ITEM NO. | PART NUMBER | DESCRIPTION | Vendor | Vendor PN | QTY. |
|----------|-------------|---|-----------------|------------|------|
| 1 | 2327989-1 | Connector, M12, 8 Pin, X Code, In-Line, Field Termination | TE Connectivity | 2327989-1 | 1 |
| 2 | 19-1260-05 | Starlink Low Capacity Cable, xx Meters | Starlink | 19-1260-05 | 1 |

| | | | | |
|---|--|---|------------|------------------|
| <div>DIMENSIONS ARE IN INCHES [MM] TOLERANCES UNLESS OTHERWISE SPECIFIED: X.X ± 0.020 X.XX ± 0.010 X° ± 1° X.XXX ± 0.005 INTERPRET DRWING PER ASME Y14.5M - 2018 UNLESS OTHERWISE SPECIFIED: • TOLERANCES APPLY AFTER ALL POST PROCESSING • BREAK ALL SHARP EDGES TO 0.005" • MACHINED SURFACE FINISH TO BE 63µin Ra OR BETTER • PARTS TO BE FREE OF BURRS OR FLASH AND DEBRIS WHEN PACKAGED PROPRIETARY AND CONFIDENTIAL <small>THE INFORMATION CONTAINED IN THIS DRAWING IS THE INTELLECTUAL PROPERTY OF THE COMPANY LISTED. ANY REPRODUCTION OR DISCLOSURE WITHOUT WRITTEN CONSENT IS PROHIBITED.</small></div> | MATERIAL: | COMPANY: TILT AUTONOMY | | |
| | FINISH: | PART NAME: Cable Assembly, Starlink to M12 Ethernet, Low Capacity, Field Termination | | |
| | (WEIGHT): 0.30 LBS | PART NUMBER - REVISION: 100-080-A | | |
| | OVERALL PROFILE TO CAD MODEL UNLESS OTHERWISE SPECIFIED  0.020 | RELEASE STATUS: RELEASED | SIZE: B | SHEET: 1 of 1 |